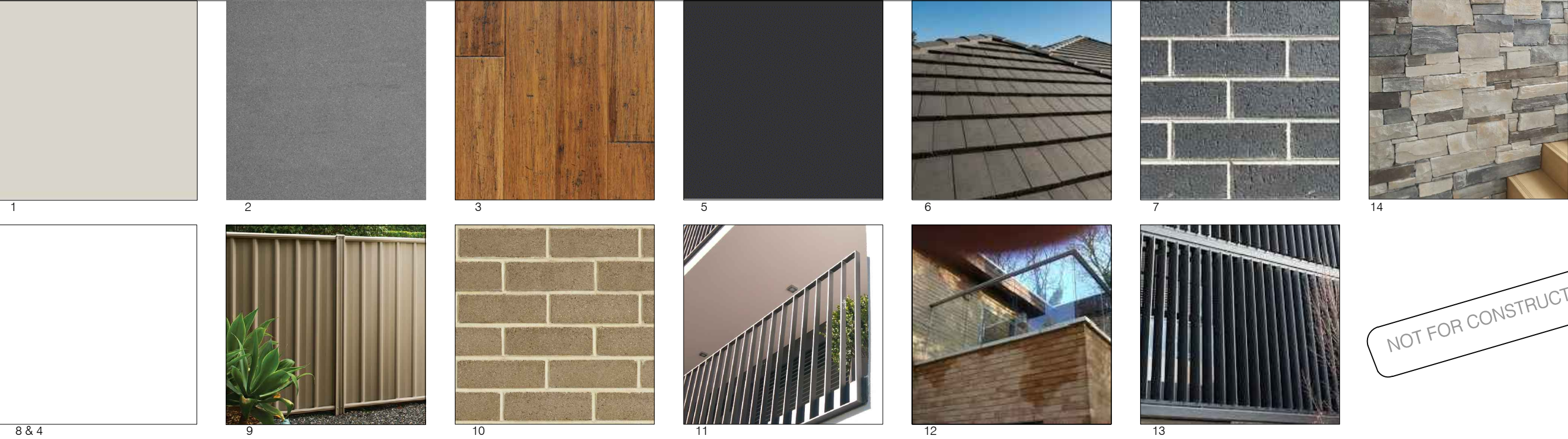





SCHEDULE OF MATERIALS AND FINISHES

ELEVATION / PLAN NOTATION	ELEMENT	MATERIAL	FINISH
WALL			
1.	PAINTED WALLS	FRAMED WALLS	PAINT - DULUX "SURFMIST" OR SIMILAR
2.	TILED WALLS	TILES GLUED TO PLASTERBOARD WALL	TILES - CLASSIC CERAMICS "FRASSINO" OR SIMILAR
FLOOR			
3.	LAMINATE FLOORING	BAMBOO FLOORING GLUED TO CONCRETE FLOOR	GENESIS "BALINESE TEAK" OR SIMILAR
CEILING			
4.	PAINTED CEILING	SET PLASTERBOARD	PAINT - DULUX "CEILING WHITE1" OR SIMILAR
WINDOWS			
5.	PAINTED WINDOWS	ALUMINUM POWDERCOTE	PAINT - DULUX "MONUMENT" OR SIMILAR
ROOF			
6.	TILE ROOFING	ROOF STRUCTURE BASE	ROOF TILES "BORAL" OR SIMILAR
WALL			
7.	EXTERNAL WALL	DOUBLE BRICK	PGH "PEWTER" OR SIMILAR
WALL			
8.	EXTERNAL WALL	RENDERED BRICK / RENDERED FRAMED	PAINT - DULUX "WHITE ON WHITE" OR SIMILAR
FENCE			
9.	PRE FINISHED FENCE	COLOURBOND	PAINT - "PAPERBARK" OR SIMILAR
WALL			
10.	EXTERNAL WALL	DOUBLE BRICK	PGH "MEGALONG VALLEY GREY" OR SIMILAR
BALCONY - BALUSTRADE			
11.	METAL BALUSTRADE	ALUMINUM POWDER COATED FRAME AND HANDRAIL	PAINT - DULUX "MONUMENT" OR SIMILAR
BALCONY - BALUSTRADE			
12.	PRE FINISHED GLASS BALUSTRADE	SEMI-FRAMELESS GLASS IN ALUMINUM POWDER COATED FRAME AND HANDRAIL	SEMI-FRAMELESS GLASS PAINT - DULUX "MONUMENT" OR SIMILAR
SUN LOUVERS (ML)			
13.	PRE FINISHED FIXED METAL LOUVERS	SLATTED ALUMINUM POWDERCOAT	'LOUVERTEC SUN LOUVERS' OR SIMILAR PAINT - DULUX "MONUMENT" OR SIMILAR
WALL			
14.	EXTERNAL WALL	STONE CLADDED BRICK	STONE CLAD-PPM STONES 'STACKSTONES' OR SIMILAR



NOT FOR CONSTRUCTION

DEVELOPMENT APPLICATION (DA) & CONSULTANTS COORDINATION

<div><div>RHIZOME</div><div></div></div>	<div><div></div><div><div>Address: 117 Waterloo Road, Greenacre, NSW, 2190 Tel: (02) 9793-0344    Mobile: 0415 139 217 Fax: (02) 9728 0748    Email: <a href="mailto:info@akg.com.au">info@akg.com.au</a></div><div><div>Eng. ANDREW MUMFORD B.Eng. (CIVIL), P.ENG., D.(STRUCT.), NPEI, M.Eng. Aust., CPENG CIVIL &amp; STRUCTURAL CONSULTANTS</div></div></div></div>	Rev:	Notes:	Date:	Project:	Drawing Title:				Job No.	Dwg No.	Rev.
		A	DA ISSUE	18.09.24	Proposed Alts & Adds 67 Hillcrest Avenue Greenacre NSW 2190	FINISHES & MATERIAL BOARD (SKETCH-03)				048/24	031 15 SHEETS	OF A
					Client:	Drawn by	Date:	Scale:				
					A&K ENGINEERING GROUP P/L	ST/AK	15.04.24	NTS @ A3				